

Quality Criteria Verification
Executive Summary
For QCV, Stage Rollout, DMSU and EGI internal

Name of the component	IGE.gsisshterm.sl6.x86_64-1.3.5		
Release	1.3.5	RT Ticket	5524 5525
Software Provider	IGE		
	Mattias Ellert	mattias.ellert@fysast.uu.se	
Validator	Name:	E-Mail	
	Enol Fernández	enolfc@gmail.com	
V. Hours Worked	2:00		
Component status	Accepted	Date	03/06/2013
Verification start date	30/05/2013	Verification end date	03/06/2013

Summary:

This is a minor update of gsisshterm with VOMS support. Verification consisted in basic functionality check.

GGUS Tickets:

https://ggus.eu/ws/ticket_info.php?ticket=94422

Summary of Quality Criteria verification:

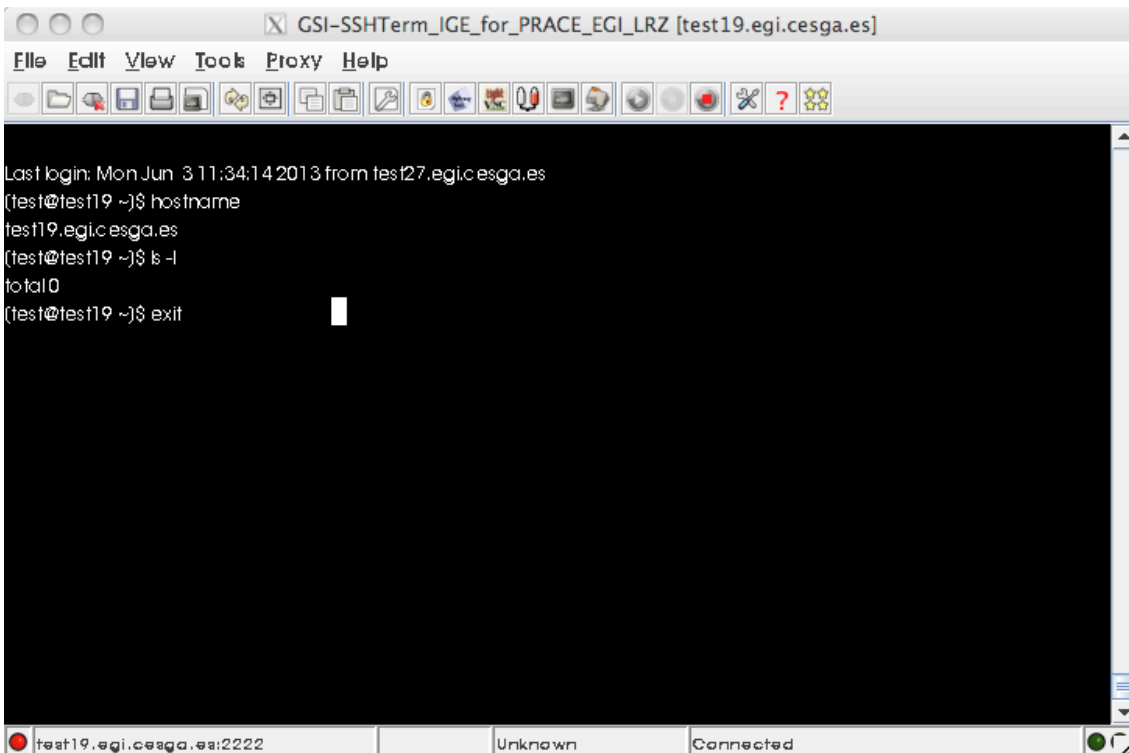
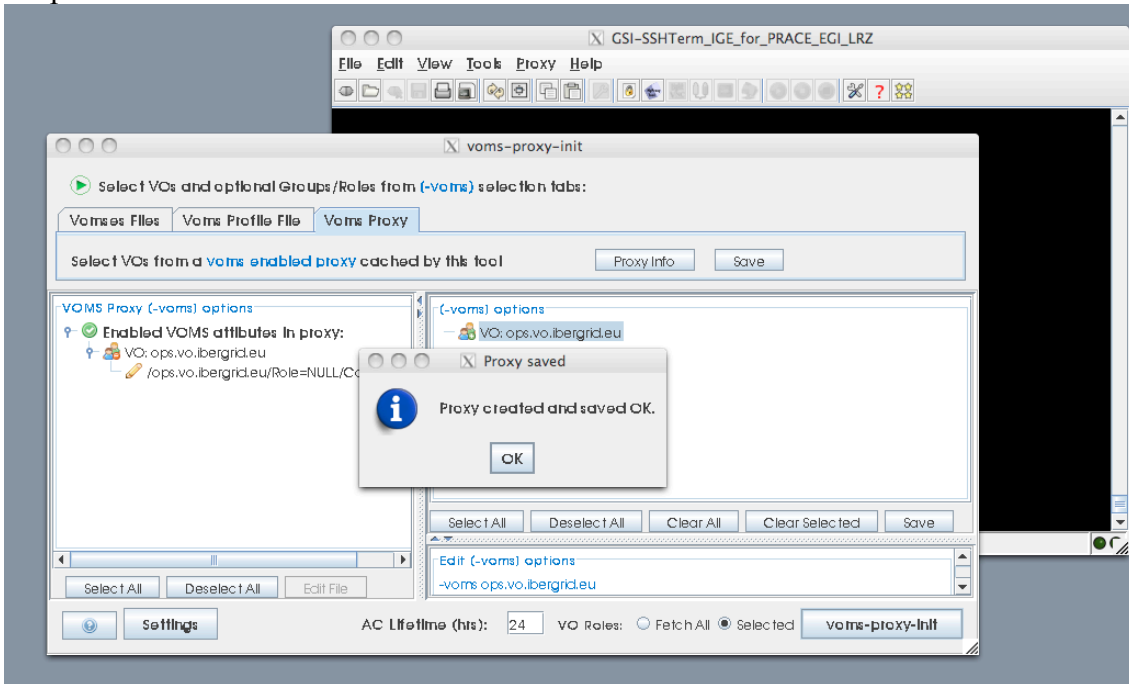
	Generic Quality Criteria Total (Critical/Non critical)			
	Passed	Not passed	Not Applicable	Total
TP				
VLD	9	0	3	12
	Specific Quality Criteria			
TP				
VLD	3		3	6

Criteria	Accepted (Y/N/NA)	Tested (TP/VLD)	Comments	RELEASE:
DOCUMENTATION QC				
GENERIC_DOC_1 (Functional Description)	Y	VLD	At sourceforge	
GENERIC_DOC_2 (Release Notes)	Y	VLD	At RT ticket	
GENERIC_DOC_3 (User Documentation)	Y	VLD	Online help	
GENERIC_DOC_4 (Online help (man pages))	Y	VLD	Online help available	
GENERIC_DOC_5 (API Documentation)	NA			
GENERIC_DOC_6 (Administrator Documentatio	NA			
GENERIC_DOC_7 (Service Reference Card)	NA			
GENERIC_DOC_8 (Software License)	Y	VLD	GPLv2	
GENERIC_DOC_9 (Release changes testing)	N	VLD	No testing doc provided	
SOFTWARE DISTRIBUTION QC				
GENERIC_DIST_1 (Source Code Availability)	Y	VLD	At sourceforge	
GENERIC_DIST_3 (Binary Distribution)	Y	VLD	See report	
SOFTWARE FEATURES QC				
GENERIC_SOFT_1 (Backwards Compatibility)	NA			
GENERIC_SOFT_2 (New features testing)	Y	VLD	Tested VOMS proxies	
SERVICE CRITERIA QC				
GENERIC_SERVICE_1 (Service control and sta	NA			
GENERIC_SERVICE_2 (Log Files)	NA			
GENERIC_SERVICE_3 (Service Reliability)	NA			
GENERIC_SERVICE_4 (Service Robustness)	NA			
GENERIC_SERVICE_6 (Default Password Conf	NA			
GENERIC_SERVICE_7 (Default Configuration)	NA			
SECURITY QC				
GENERIC_SEC_1 (World Writable Files)	NA			
GENERIC_SEC_3 (Passwords in world readable	NA			
MISCELLANEOUS QC				
GENERIC_MISC_1 (Bug Tracking System)	Y	VLD	In GGUS	
AUTHENTICATION QC				
AUTHN_CRED_1 (X.509 Certificate support)	Y	VLD		
AUTHN_CRED_2 (SHA2 Certificate support)	N	VLD	Same issue as previous version	
AUTHN_CRED_3 (RFC Proxy support)	Y	VLD		
AUTHN_PROTO_1 (TLSSSLv3 Support)	Y	VLD		
AUTHORISATION QC				
AUTHZ_PCYDEF_3 (Ban UserGroup of users)	NA			
AUTHZ_PCYDEF_4 (Allowed users definition)	NA			
AUTHZ_PEP_2 (User Mapping)	NA			
AUTHZ_PEP_3 (Argus Integration)	NA			
INTERACTIVE JOB MANAGEMENT QC				
INTERACTIVE_JOB_1 (Interactive login)	Y	VLD	Test login to gsissh machine OK	
MONITORING PROBES QC				
MON_PROBE_GENERIC_1 (Certificate Lifetime	NA			

MON_PROBE_GENERIC_2 (Service Probe)	NA		
CLIENT TOOLS QC			
CLIENT_TOOLS_1 (Command line options cohe	NA		
CLIENT_TOOLS_2 (Error Messages)	Y	VLD	Error messages OK

Tests:

Start term and login into gsissh server using voms (see screenshots), no issue with the script.



Not applicable Quality Criteria

Specific Functional Tests to be repeated in SR:

Test number	Description	Motivation

Specific Non-functional tests (Scalability, etc...) to be repeated in SR:

Test number	Description	Motivation

Comments for UMD QC definition (TSA2.2):

Comments for SR (TSA1.3):

Comments for DMSU (TSA2.5):

Comments for TP: